

HC 25 - 30

RAVENHEAT[®]

HIGH EFFICIENCY CONDENSING BOILERS

HC EFFICIENCY AND RELIABILITY.

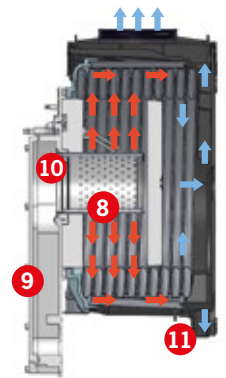
HC is the new Ravenheat condensing boiler which offers excellent performance both in heating and in the production of domestic hot water. The new condensing heat exchanger

combines simplicity and reliability over time, ensuring and considerably increasing the overall efficiency of the system.

STRUCTURE

The main strong point is a stainless steel exchanger, formed by a single spiral, with suitably sized passages, housed inside a stainless steel casing closed by an aluminum front and a technopolymer bottom. The premix burner guarantees excellent combustion efficiency and very low NOx emissions. A wide modulation ratio makes it possible

to adapt the boiler power to the actual needs of the system. To change the type of gas, no transformations with diaphragms or particular gas nozzles are necessary, but everything takes place by modifying a single parameter on the electronic card.



Visione laterale

- | | | |
|------------------------|-------------------------|-----------------------------------|
| 1 Front cover | 7 Protection chamber | 11 Air/gas mixing manifold |
| 2 Insulating plate | 8 Smoke collection tank | 12 60/100 fume exhaust connection |
| 3 Stainless steel coil | 9 Back closure | 13 Condensate drain |
| 4 Plate | 10 Pre-mix burner | |

HYDRAULIC GROUP



The Hydraulic Group, entirely made of brass, guarantees reliability and durability over time.

The hydraulics are complete with:

- High efficiency circulator (ErP)
- 3-way diverter valve
- Bypass
- Loading group
- Sanitary NTC probe
- Sanitary flow meter

ELECTRONICS



Thanks to intelligent electronics and programmable functions, boiler operation can be easily adapted to the actual needs of the user. By connecting an external probe, climatic thermoregulation operation is obtained during which the delivery temperature to the system is regulated according to the external air temperature, guaranteeing absolute comfort whi-

le optimizing running costs. The boiler is also equipped with an antifreeze function. The intuitive control panel and the display showing the temperatures and boiler operating status allow the end user easy management and programming.

DESIGN



HC was created to better adapt to the domestic environment. Clean line and extremely compact dimensions (400x700x250) allow installation even in narrow spaces, an open therm remote control is also available which allows control of the boiler in any installation condition. The casing that covers the boiler, protruding in the lower

part, was designed to hide the connection pipes to the system from view, with an impeccable aesthetic result. The depth of only 250 mm allows it to be installed even in a niche built into the wall.

CONNECTION PROTECTION BOX



Thanks to the use of the optional casing, it is possible to cover any additional components such as polyphosphate dispensers

and magnetic dirt separator, ensuring an optimal aesthetic result.

HC IN WALL



Built-in version also available.

Created for professional installations integrated into facades, it is the ideal product to solve aesthetic and space problems.

The built-in frame in galvanized steel can be supplied painted and insulated so as to integrate completely with the wall that houses the boiler.

Remote control that allows you to adjust the ambient, DHW, heating temperature and to program both the temperatures

and the operating times. The display signals the anomalies.



RECOMMENDED Accessory

Remote control
Code 202.02.07



RECOMMENDED Accessory

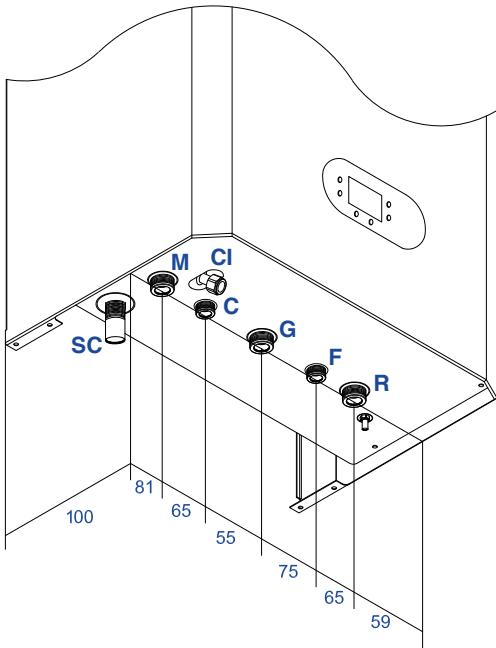
Remote control KRONOS OT11
Code 202.02.11



RECOMMENDED Accessory

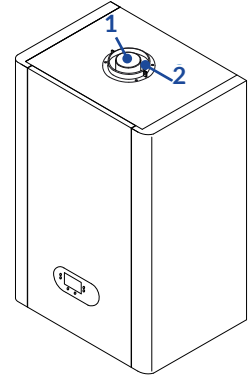
Remote control BTOUCH CRONO
Code 202.02.10

OVERALL DIMENSIONS AND CONNECTION POSITION

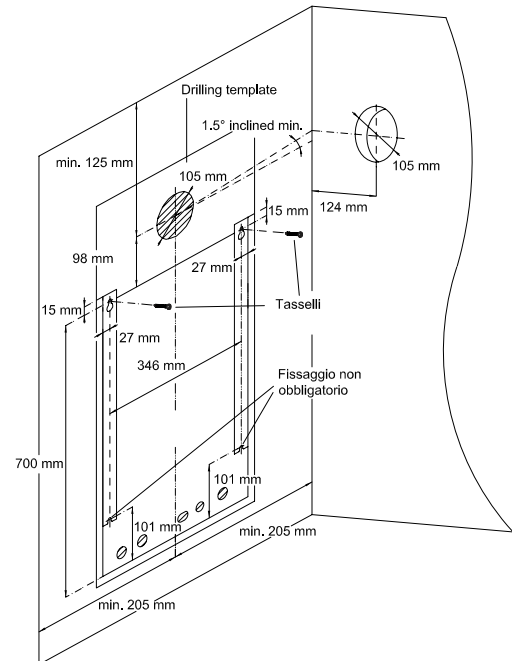
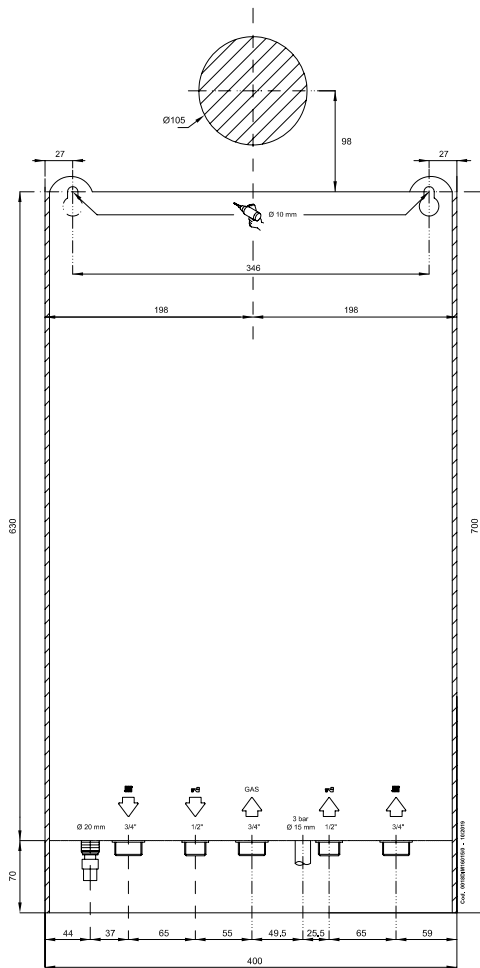


Legend

- 1 Exhaust
- 2 Aspiration
- G Gas (3/4")
- R System return (3/4")
- M System delivery (3/4")
- C Domestic hot water outlet (1/2")
- F Domestic cold water inlet (1/2")
- CI System load
- SC Condensate drain

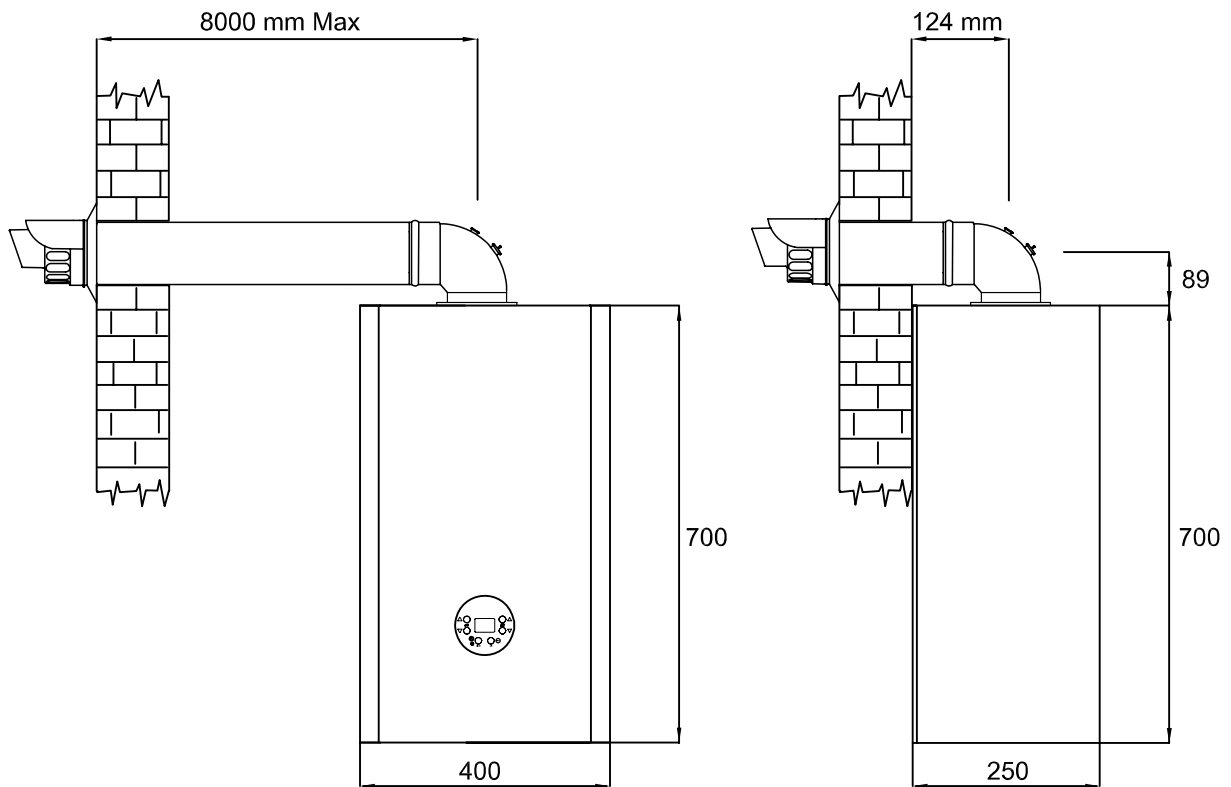


Position of the horizontal section of the combustion products discharge pipes for 60/100 concentric chimneys

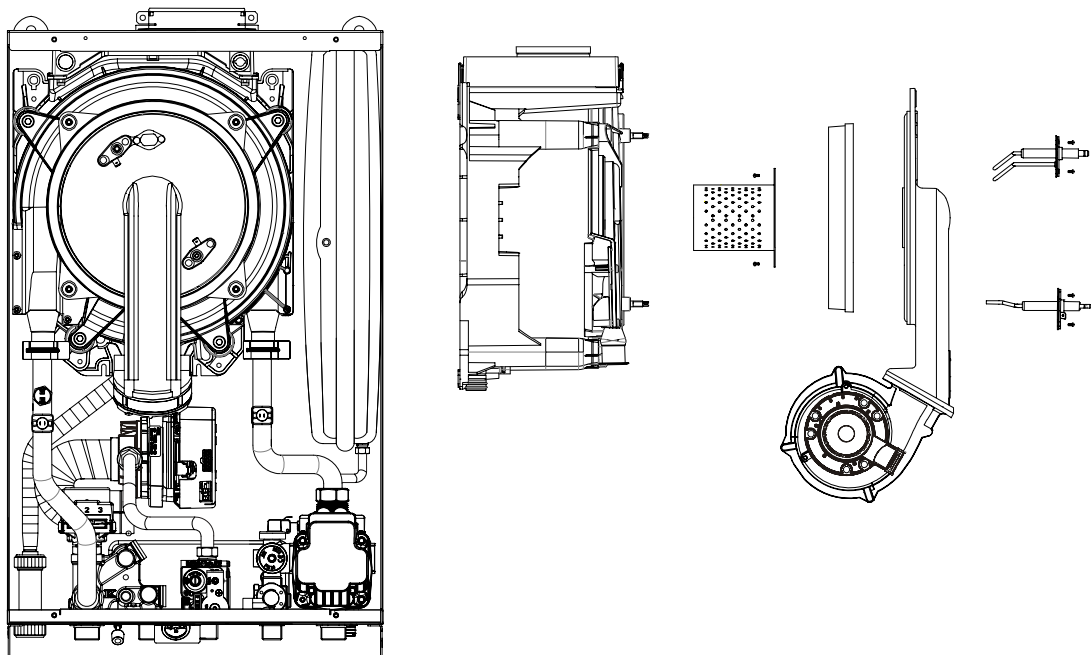


		HC 25	HC 30
Central heating nominal heat input	kW	21	25
Domestic hot water nominal heat input	kW	25.5	31
Minimum heat input	kW	3.7	4
Useful efficiency nominal heat input (80-60°C)	%	97	97.1
Useful efficiency 30% nominal heat input (return 30°C)	%	107.7	107.8
Useful efficiency nominal heat input (50-30°C)	%	105.1	105.5
C.H. seasonal space heating energy efficiency class		A	A
D.H.W. seasonal space heating energy efficiency class		A	A
D.H.W. load profile		XL	XL
NOx class		6	6
Sound power level	dB	50	52
Electrical protection index	IP	IP X4D	IP X4D
C.H. water maximum range	bar	2,5	2,5
C.H. temperature range	°C	35-80	35-80
C.H. low temperature range	°C	27-50	27-50
D.H.W. minimum flow range	L/min	11.9	14
D.H.W. minimum flow rate	L/min	2	2
C.H. connections	∅	3/4"	3/4"
D.H.W. connections	∅	1/2"	1/2"
Gas connections	∅	3/4"	3/4"
Flue type		C13 - C33 - C53-C63 - C83	
Maximum flue length (60/100)	m	8	8
Maximum flue length (80/125)	m	23	23
Maximum flue length (80/80)	m	43	43
Weights	Kg	31	31
Dimension	mm	700 x 400 x 250	

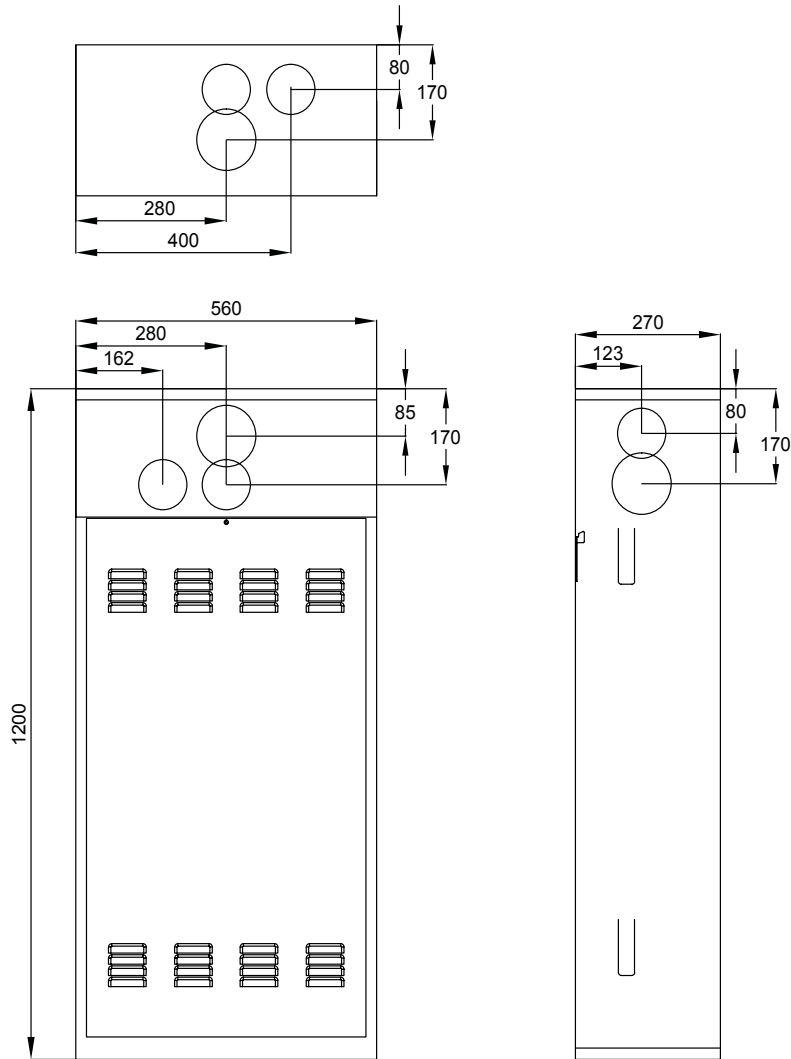
SIZE AND DIMENSIONS



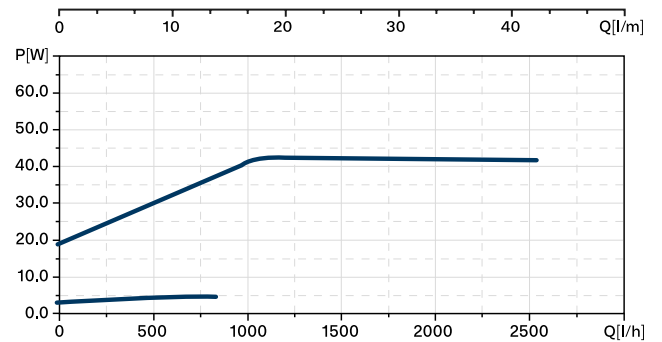
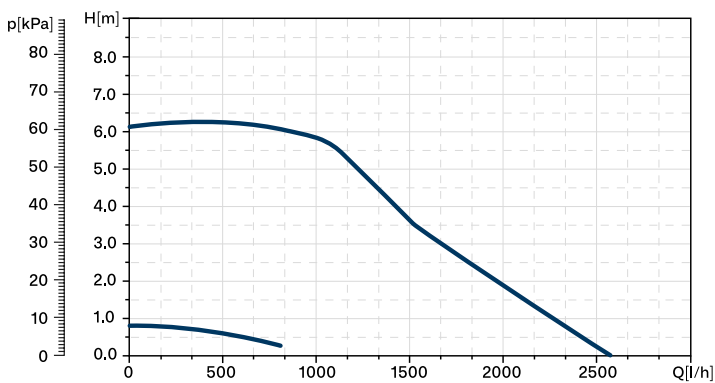
EXCHANGER COMPONENTS



BUILT-IN FRAME DIMENSIONS AND DIMENSIONS



TH0060 CIRCULATOR WORK CURVE



Note: The curves shown refer to the head available in the system and are net of the pressure drops of the boiler's internal circuits.

RAVENHEAT

AR Riscaldamento S.p.A.

Viale dell'Industria, 26/b - 37040 Veronella (VR) - Italy - www.ravenheat.eu